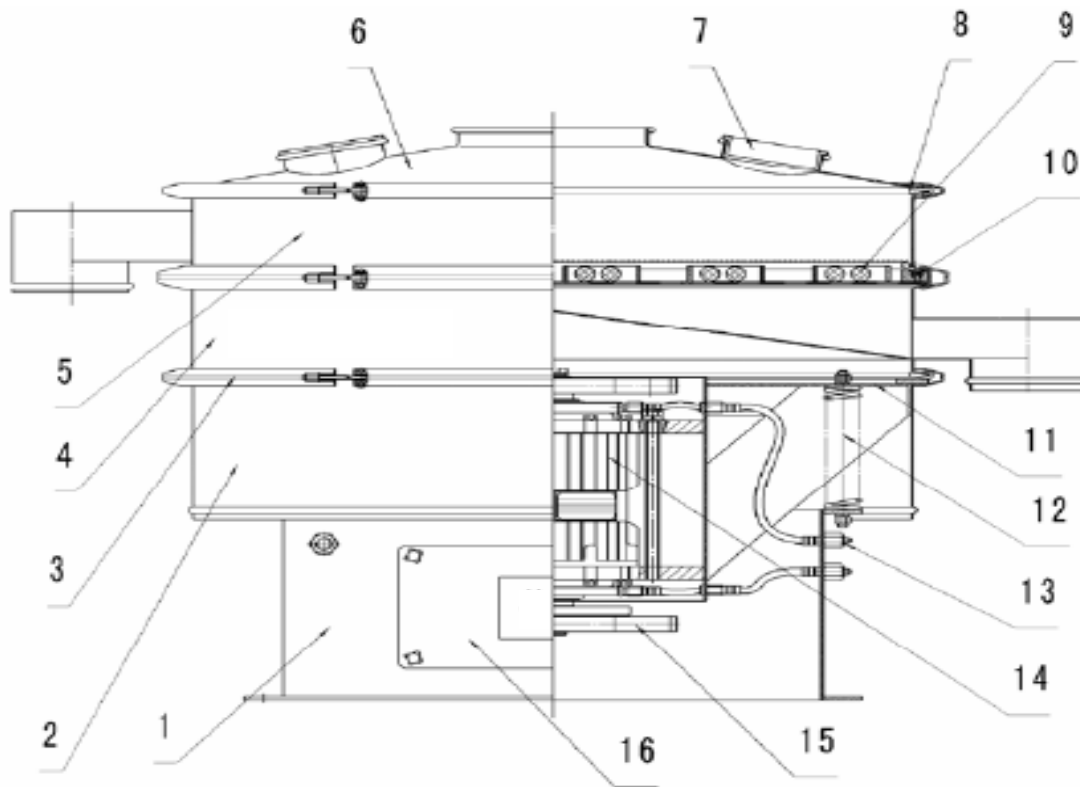


# 1. VIBRATING SIFTER

Siftonic-A series vibrating sieve is one of precise powder sieving machine, low noise, high efficiency, need only 3 - 5 minutes to rapidly replace the screen, all closed structure. Used to sieve particles, powder and mucilage.

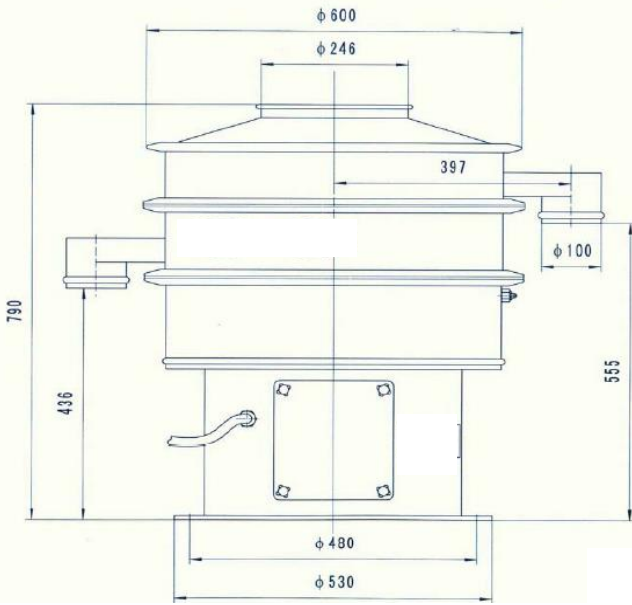
## Technical parameters

Model	Effective diameter for sieving surface (mm.)	Effective sieving area ( sq.m.)	Layer(s)	Power (Kw.) Vibration motor
SA-600	Ø 540	0.2289	1 - 4	0.25
SA-800	Ø 730	0.4183	1 - 4	0.55
SA-1000	Ø 900	0.6359	1 - 4 <td>0.75</td>	0.75
SA-1200	Ø 1100	0.9499	1 - 4	1.1
SA-1500	Ø 1400	1.5386	1 - 4	1.5



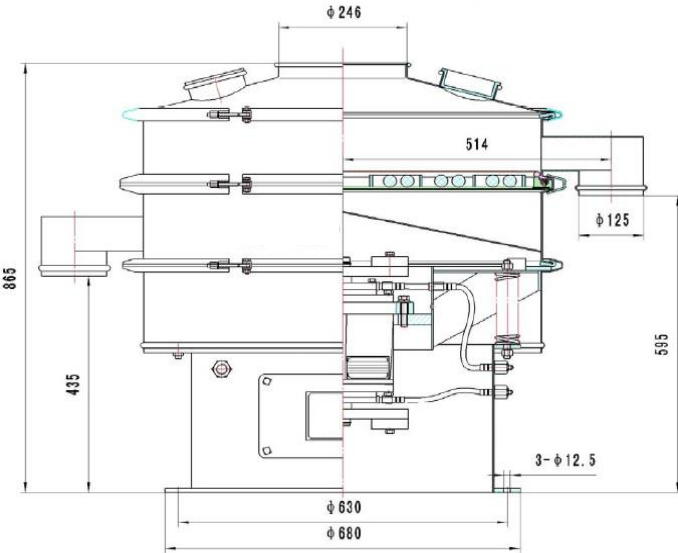
- |                       |                       |                          |
|-----------------------|-----------------------|--------------------------|
| 1.Stand               | 2.Skirt(Optional)     | 3.Clamp ring             |
| 4.Lower frame         | 5.Upper frame         | 6.Cover                  |
| 7.View port(Optional) | 8.Seal                | 9.Cleaning screen device |
| 10.Screen frame       | 11.Vibrating Platform | 12.Spring                |
| 13.Greaser            | 14.Vibrating motor    | 15.Lead angle adjustment |
| 16.Door               |                       |                          |

## Technique Standard



**SA-600-1S DRAWING**

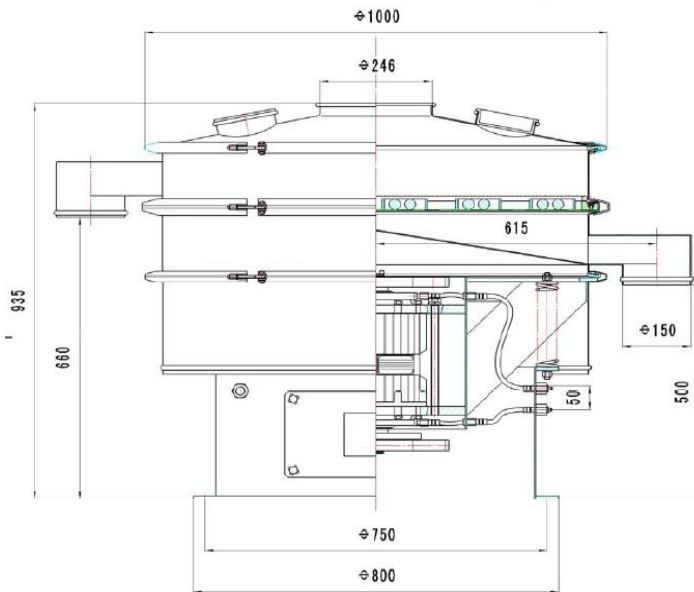
<b>1</b>	<b>Model</b>	SA-600-1S
<b>2</b>	<b>Screen</b>	
	Layer	1S
	Area/Sq.m.	0.2289
	Mesh Size	N/A
	Material	Stainless Steel
<b>3</b>	<b>Motor</b>	
	Type	YZSL 8-4
	Power/KW	0.25
	Speed/RPM	1,450
<b>4</b>	<b>Dynamic Load</b>	250N
<b>5</b>	<b>Static Load</b>	1200N
<b>6</b>	<b>Exciting Force/KN</b>	5
<b>7</b>	<b>Double Amplitude/mm.</b>	3-5



**SA-800-1S DRAWING**

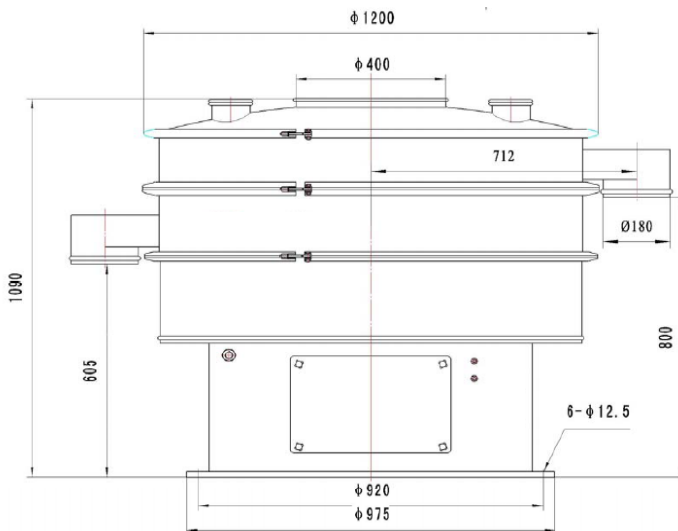
<b>1</b>	<b>Model</b>	SA-800-1S
<b>2</b>	<b>Screen</b>	
	Layer	1S
	Area/Sq.m.	0.4183
	Mesh Size	N/A
	Material	Stainless Steel
<b>3</b>	<b>Motor</b>	
	Type	YZSL 5-4
	Power/KW	0.55
	Speed/RPM	1,450
<b>4</b>	<b>Dynamic Load</b>	400N
<b>5</b>	<b>Static Load</b>	1900N
<b>6</b>	<b>Exciting Force/KN</b>	8
<b>7</b>	<b>Double Amplitude/mm.</b>	3-5

## Technique Standard



**SA-1000-1S DRAWING**

1	<b>Model</b>	SA-1000-1S
2	<b>Screen</b>	
	Layer	1S
	Area/Sq.m.	0.6359
	Mesh Size	N/A
	Material	Stainless Steel
3	<b>Motor</b>	
	Type	YZSL 15-4
	Power/KW	0.75
	Speed/RPM	1,450
4	<b>Dynamic Load</b>	700N
5	<b>Static Load</b>	2200N
6	<b>Exciting Force/KN</b>	15
7	<b>Double Amplitude/mm.</b>	3-5



**SA-1200-1S DRAWING**

1	<b>Model</b>	SA-1200-1S
2	<b>Screen</b>	
	Layer	1S
	Area/Sq.m.	0.9499
	Mesh Size	N/A
	Material	Stainless Steel
3	<b>Motor</b>	
	Type	YZSL 20-4
	Power/KW	1.1
	Speed/RPM	1,450
4	<b>Dynamic Load</b>	1000N
5	<b>Static Load</b>	2500N
6	<b>Exciting Force/KN</b>	20
7	<b>Double Amplitude/mm.</b>	3-5

## Feature

1. High efficiency, ingenious design, durable and suitable for screening any kinds of the power and viscous fluid.
2. No jam for the screen net, no powders flying around and no liquid leaking out when running, fully sealed structure and environmentally friendly.
3. Small size and can be moved easily.
4. The screen nets are uniquely designed under 500 mesh, and the net.
5. It only take 3-5 MIN to replace and clean the net conveniently.
6. Stainless Steel parts contacting material.
7. Easy to operate, impurities and coarse materials can be discharged automatically, continuous operation.